

Images for Practical I

BSC 2086L

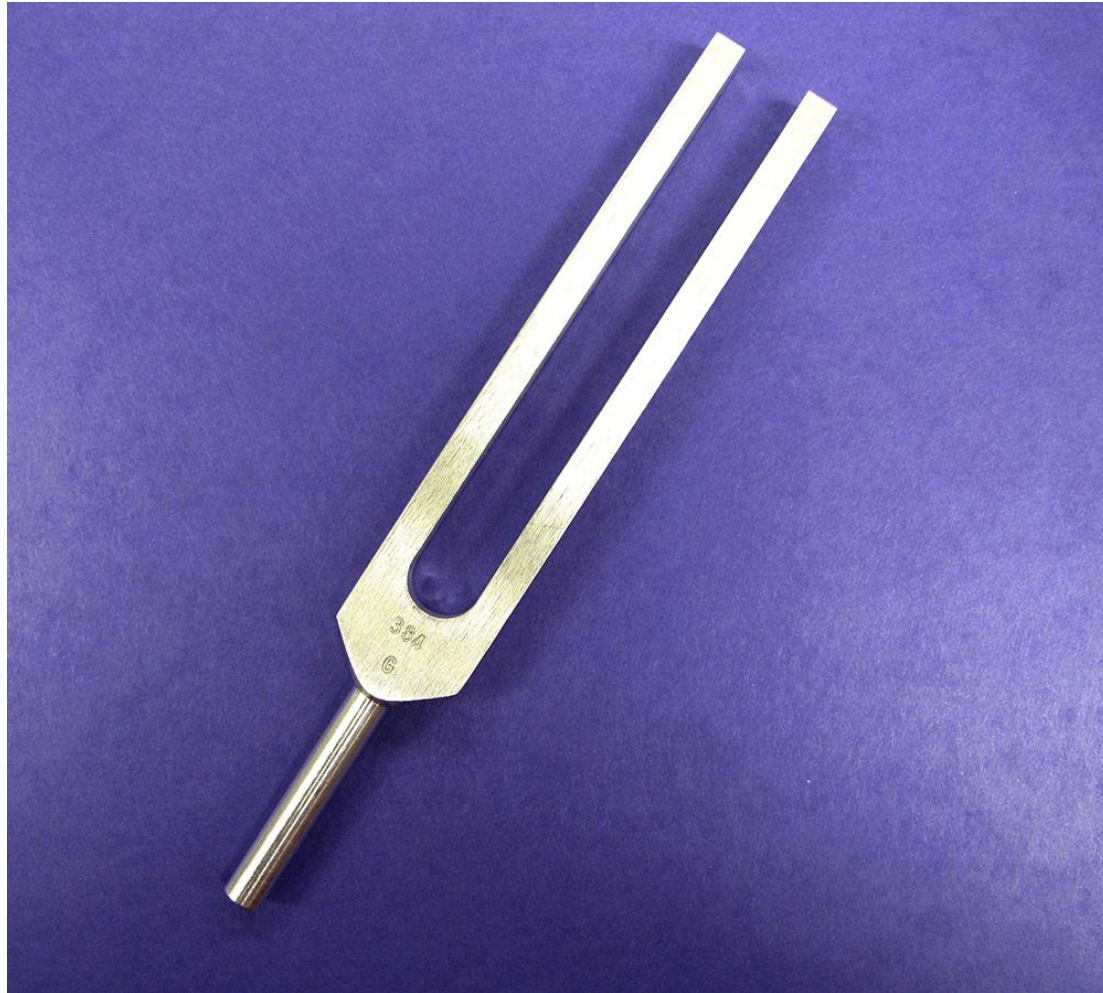
Calipers used for 2-point discrimination



Rubber Mallet used for Knee Jerk Reflex



Tuning fork used for Weber-Rinne tests



The five basic components of reflex arcs.

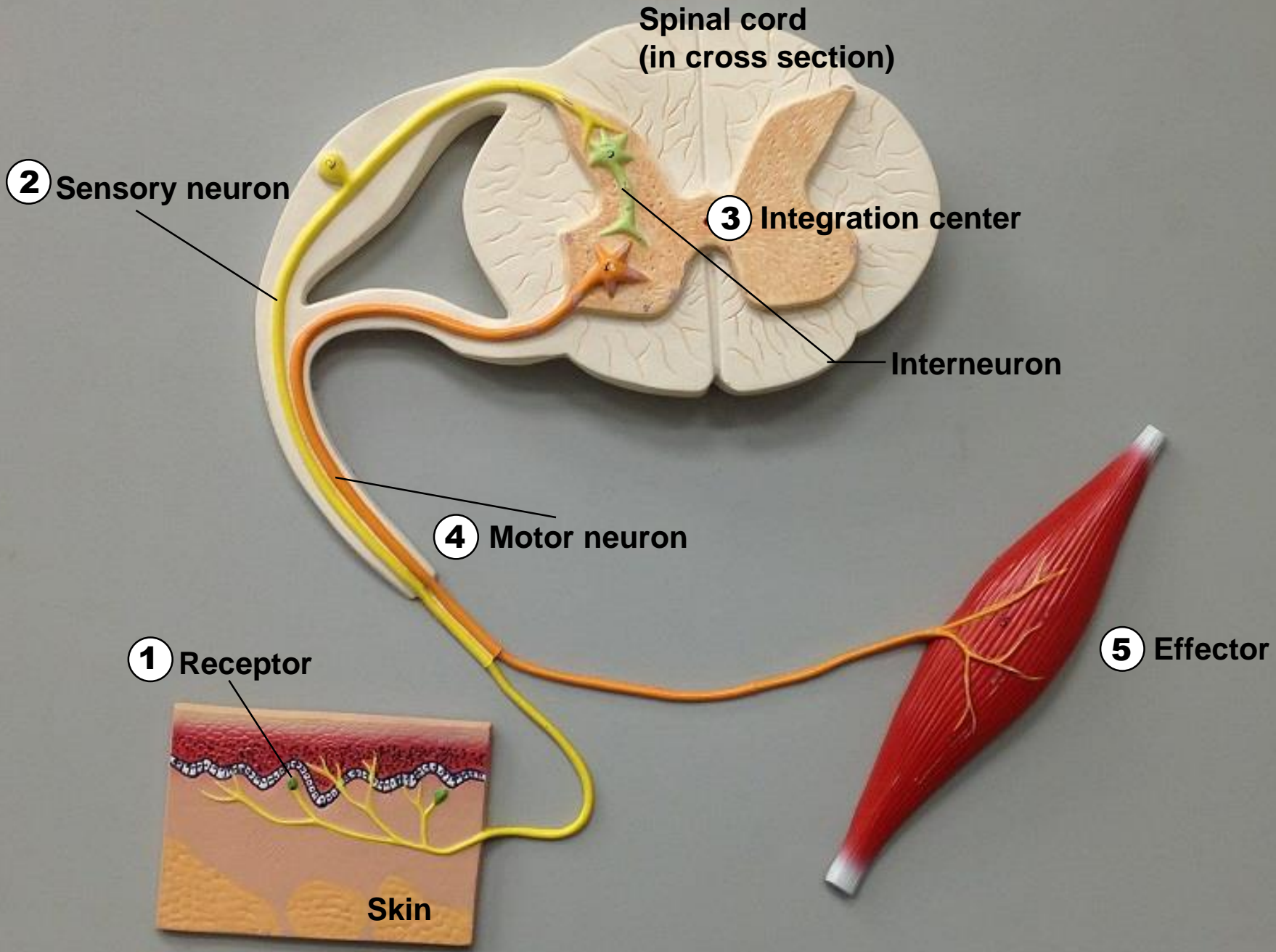
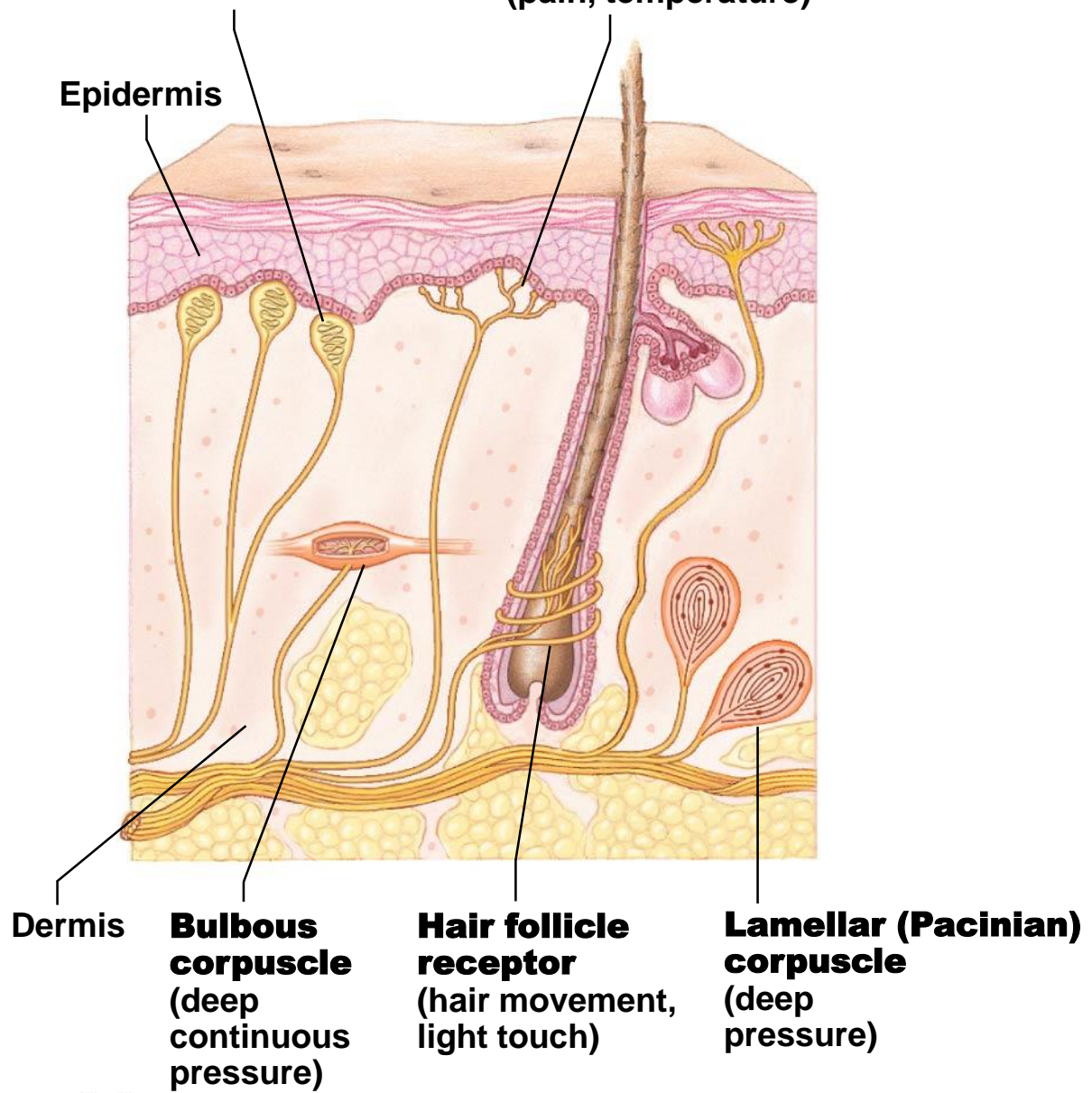


Figure 22.1a Examples of cutaneous receptors.

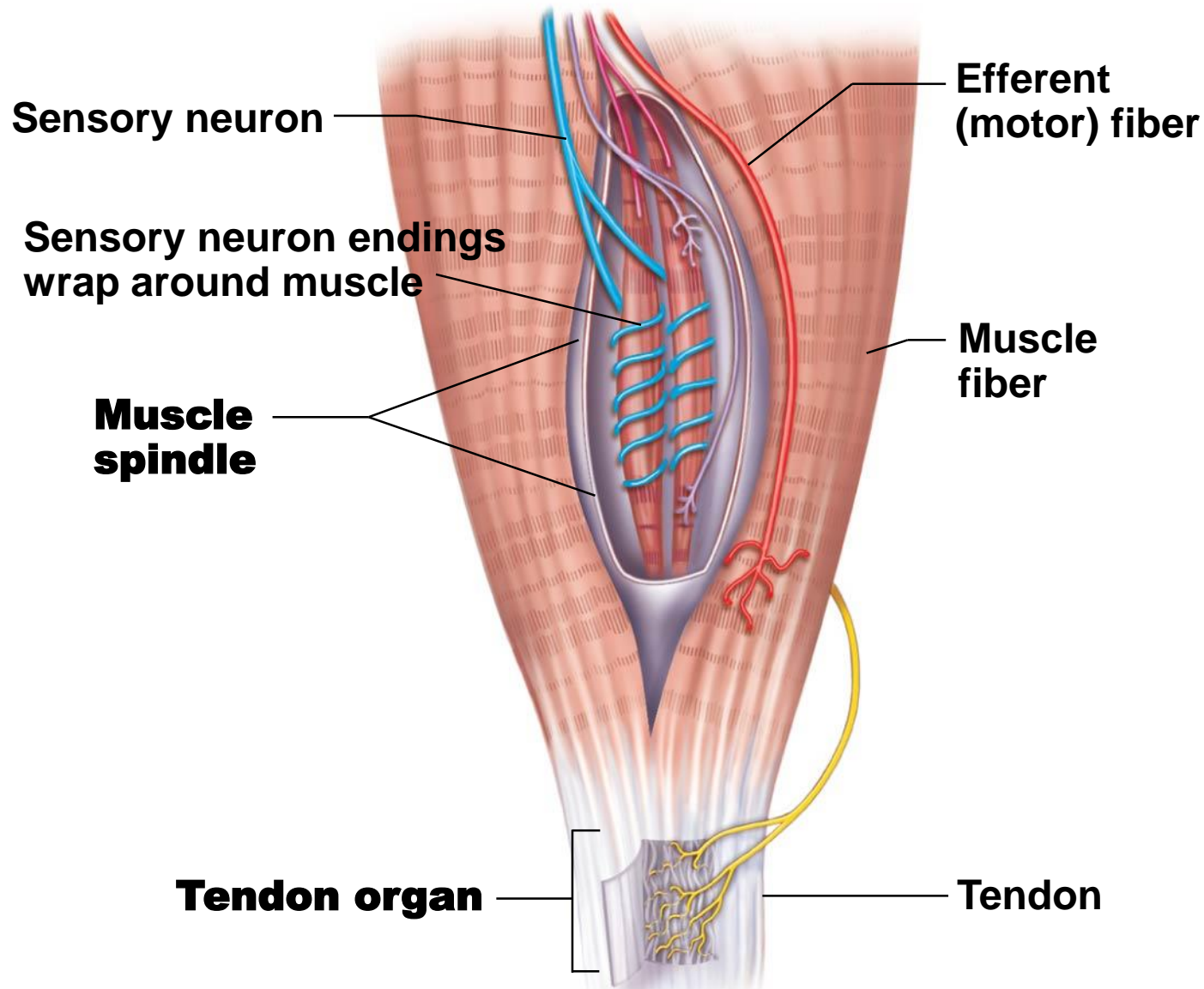
Tactile (meisner's) corpuscle (touch, light pressure)

Free nerve endings (pain, temperature)

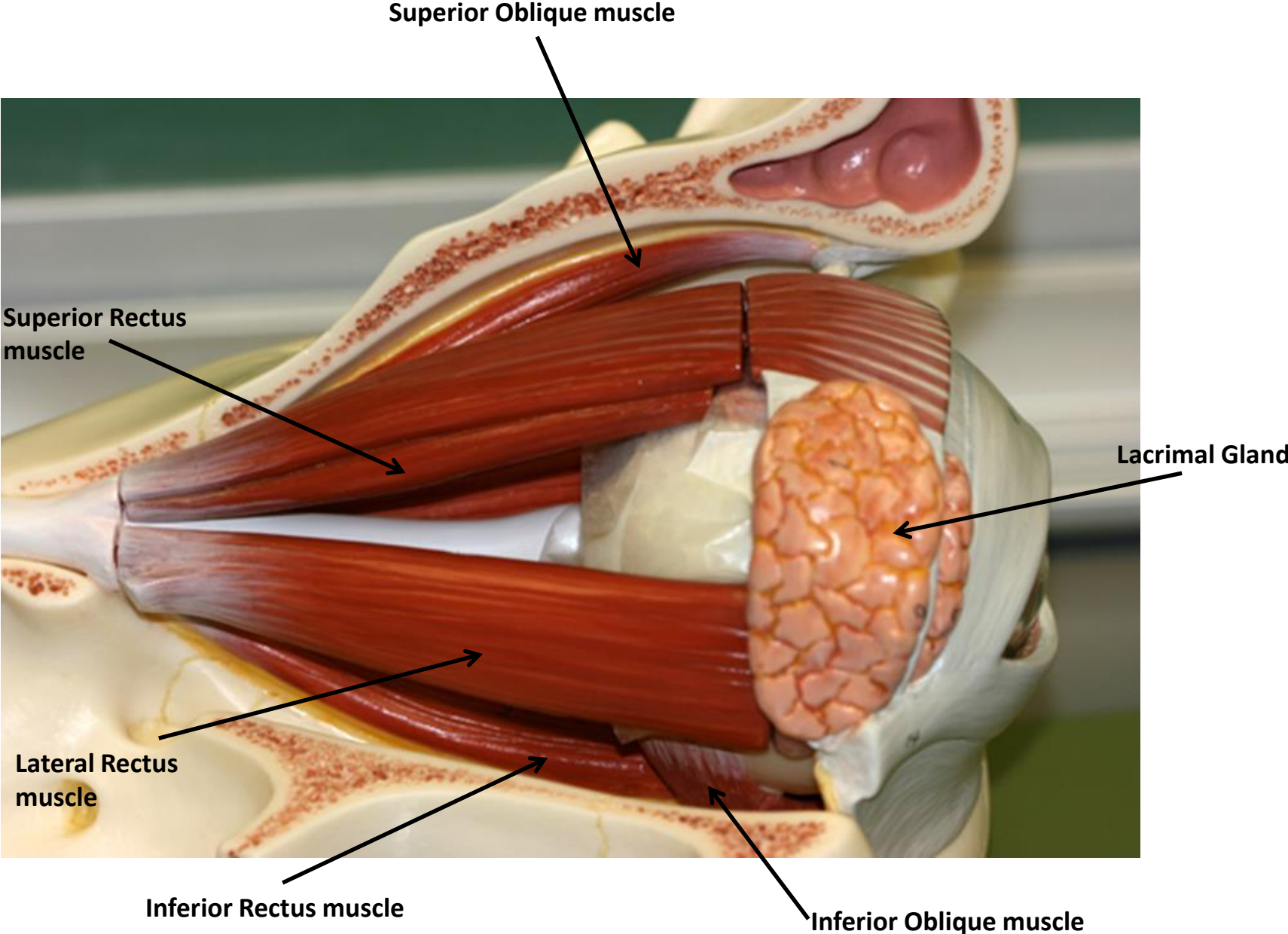


(a)

Figure 22.2a Proprioceptors.



(a)



Superior Oblique muscle

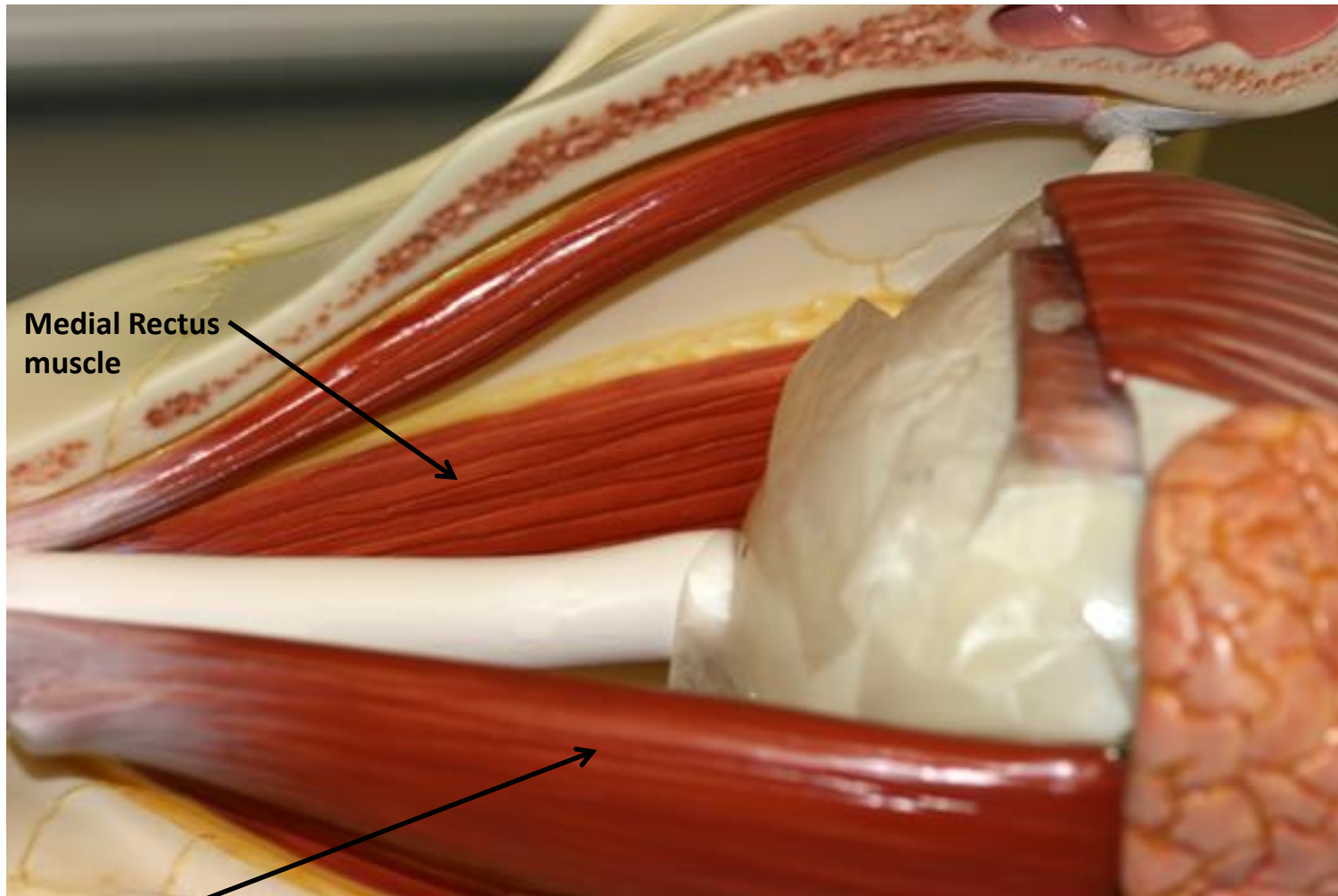
Superior Rectus muscle

Lacrimal Gland

Lateral Rectus muscle

Inferior Rectus muscle

Inferior Oblique muscle

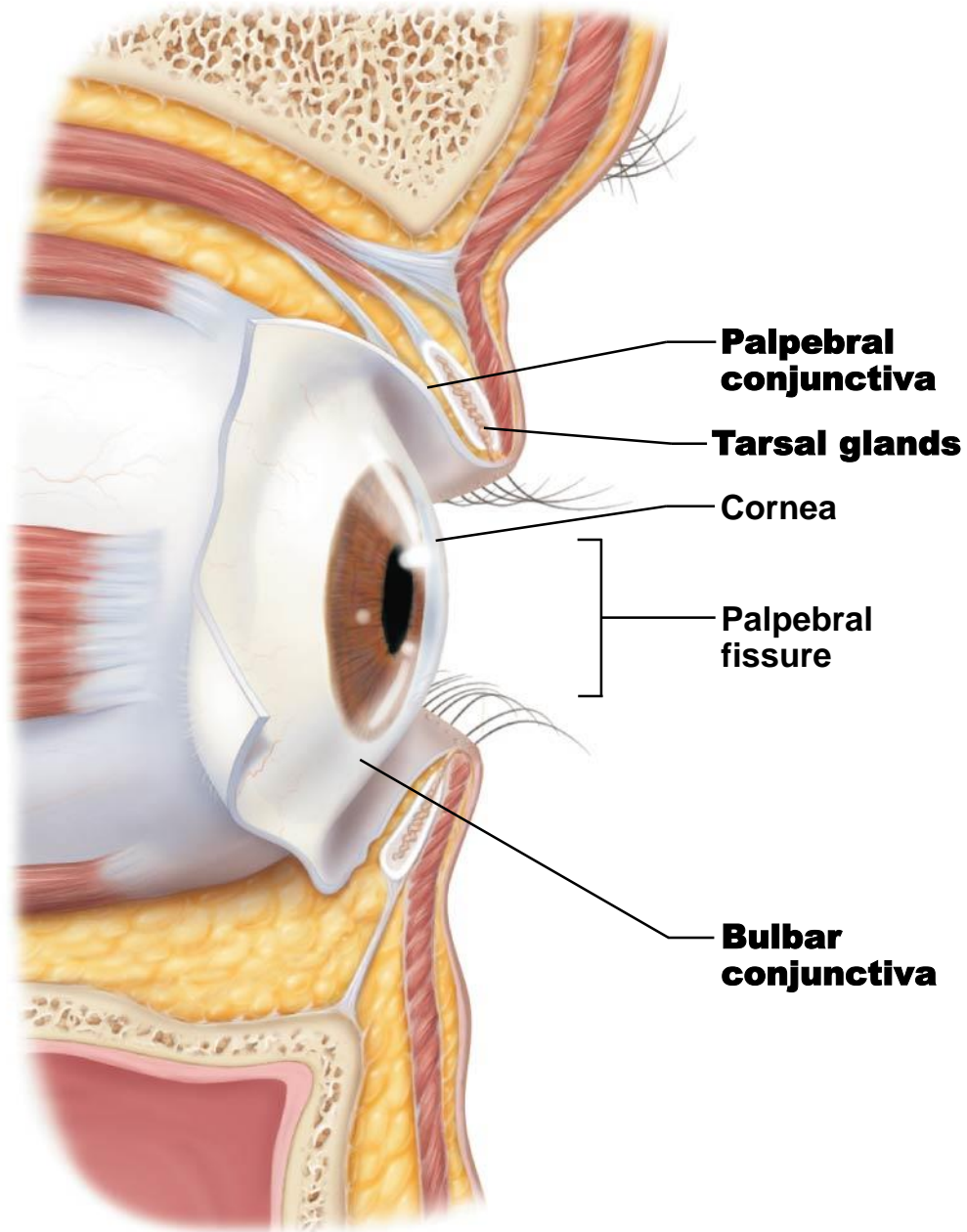


Medial Rectus
muscle

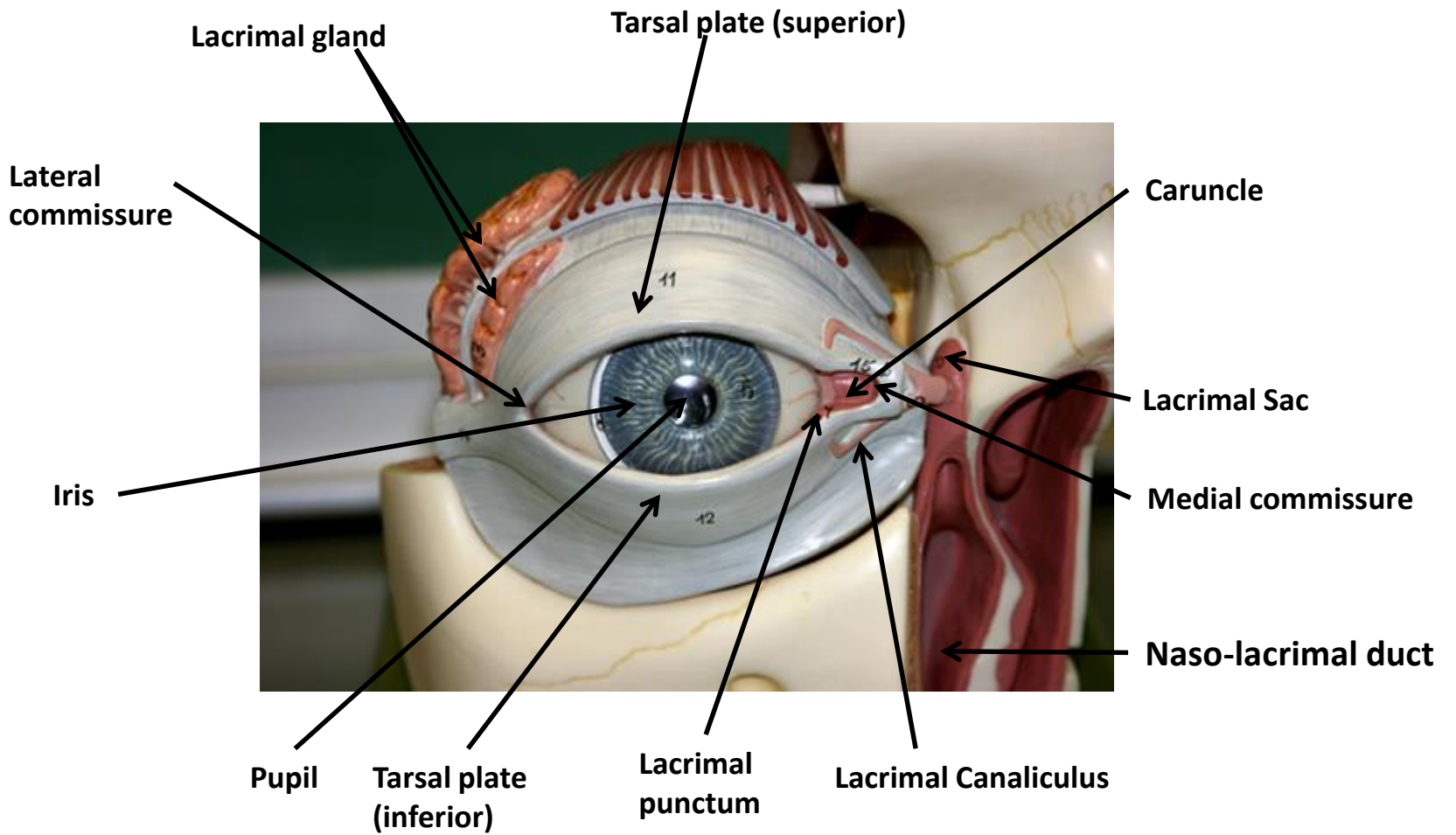
Lateral Rectus muscle

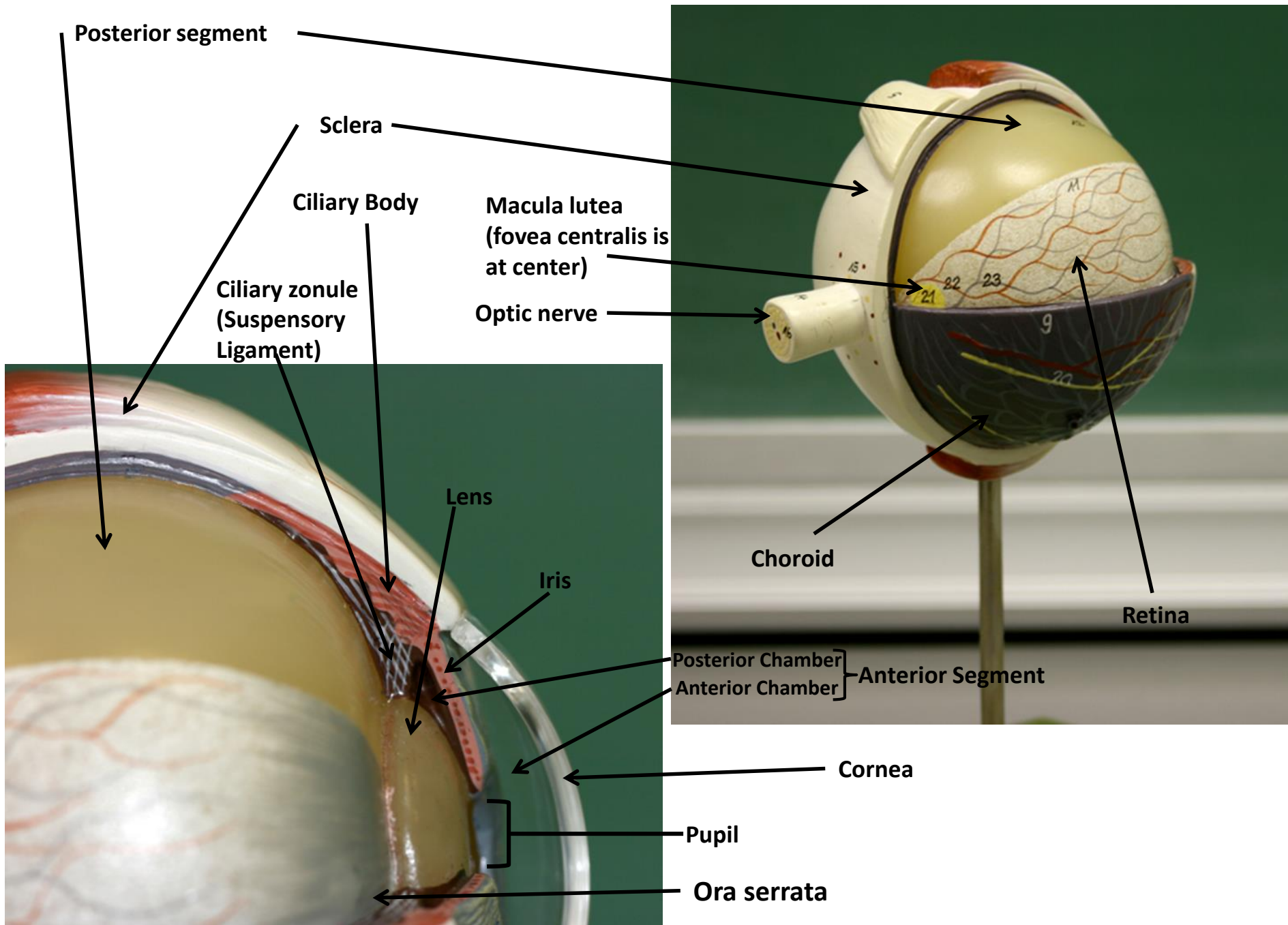
Note: Superior Oblique and Levator Palpebrae Superioris have been removed

Figure 23.1a External anatomy of the eye and accessory structures.



(a)





**Posterior segment
(contains vitreous humor)**

Ciliary Body

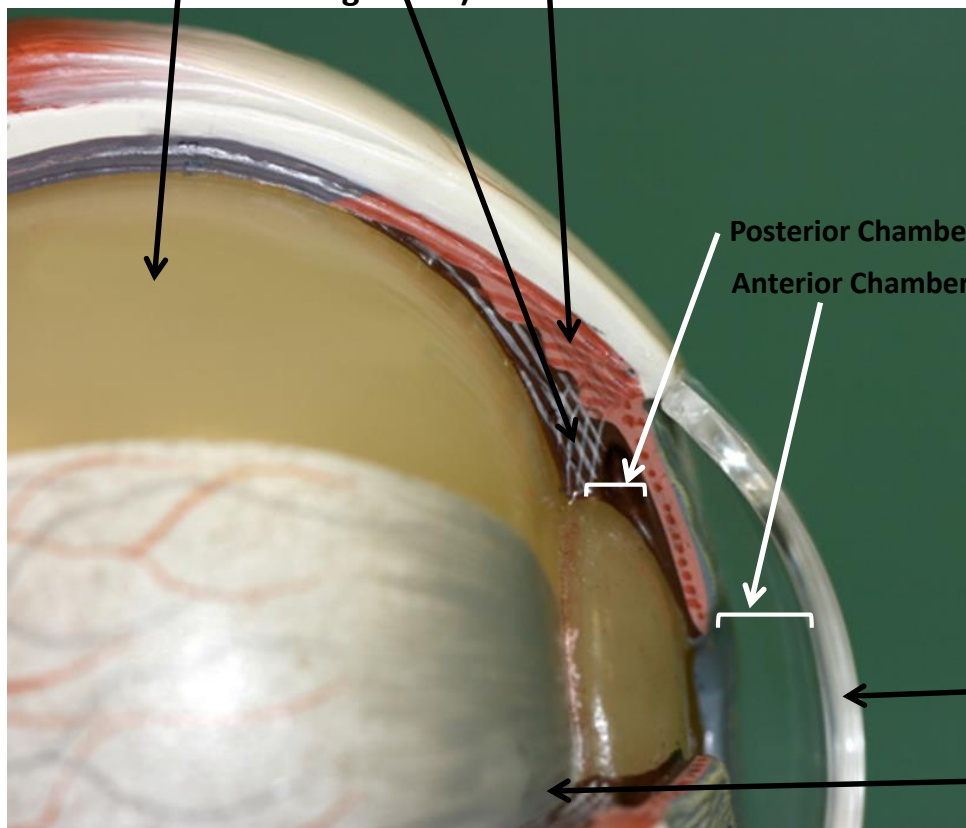
**Ciliary zonule
(Suspensory
Ligament)**

**Posterior Chamber
Anterior Chamber**

**Anterior Segment
(contains aqueous
humor)**

Cornea

Ora serrata



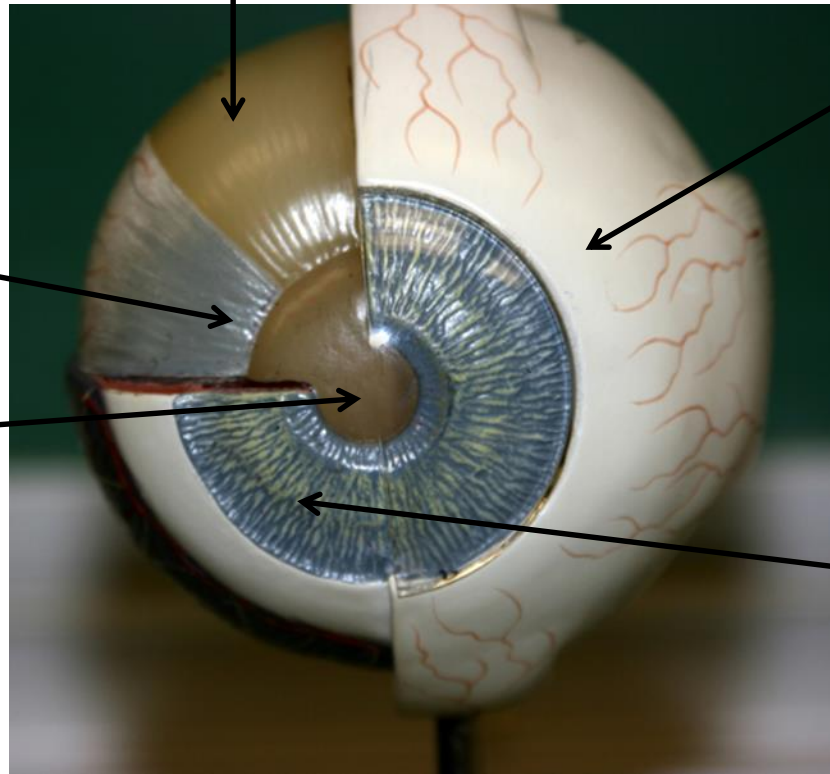
Posterior Segment

Sclera

Ora serrata

Pupil

Iris

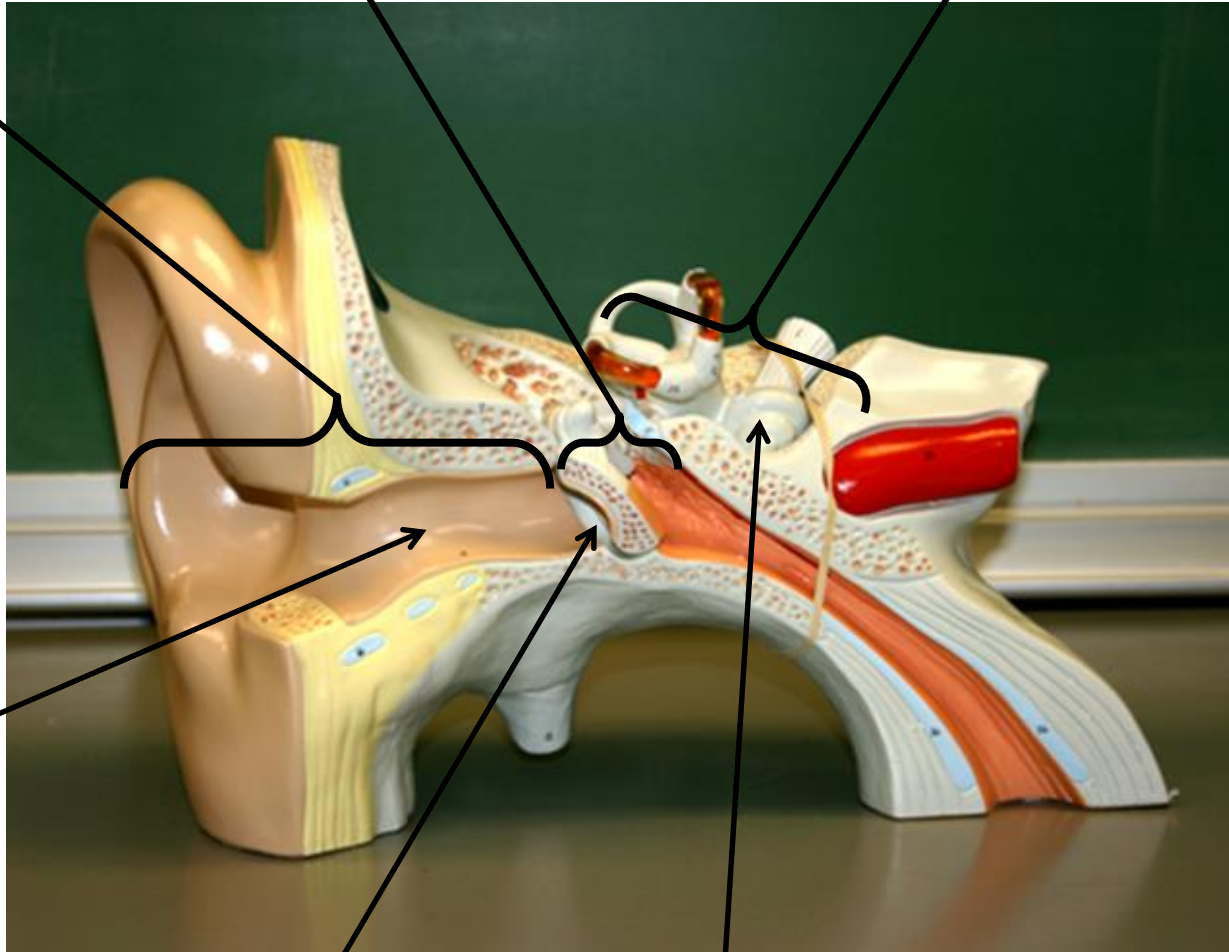


Frontal section of ear

Middle ear

Internal ear
(bony labyrinth)

External ear



External
Acoustic
Meatus

Tympanic
Membrane

Cochlear

Frontal section of ear

Semicircular canals

Vestibulocochlear nerve

Pinna

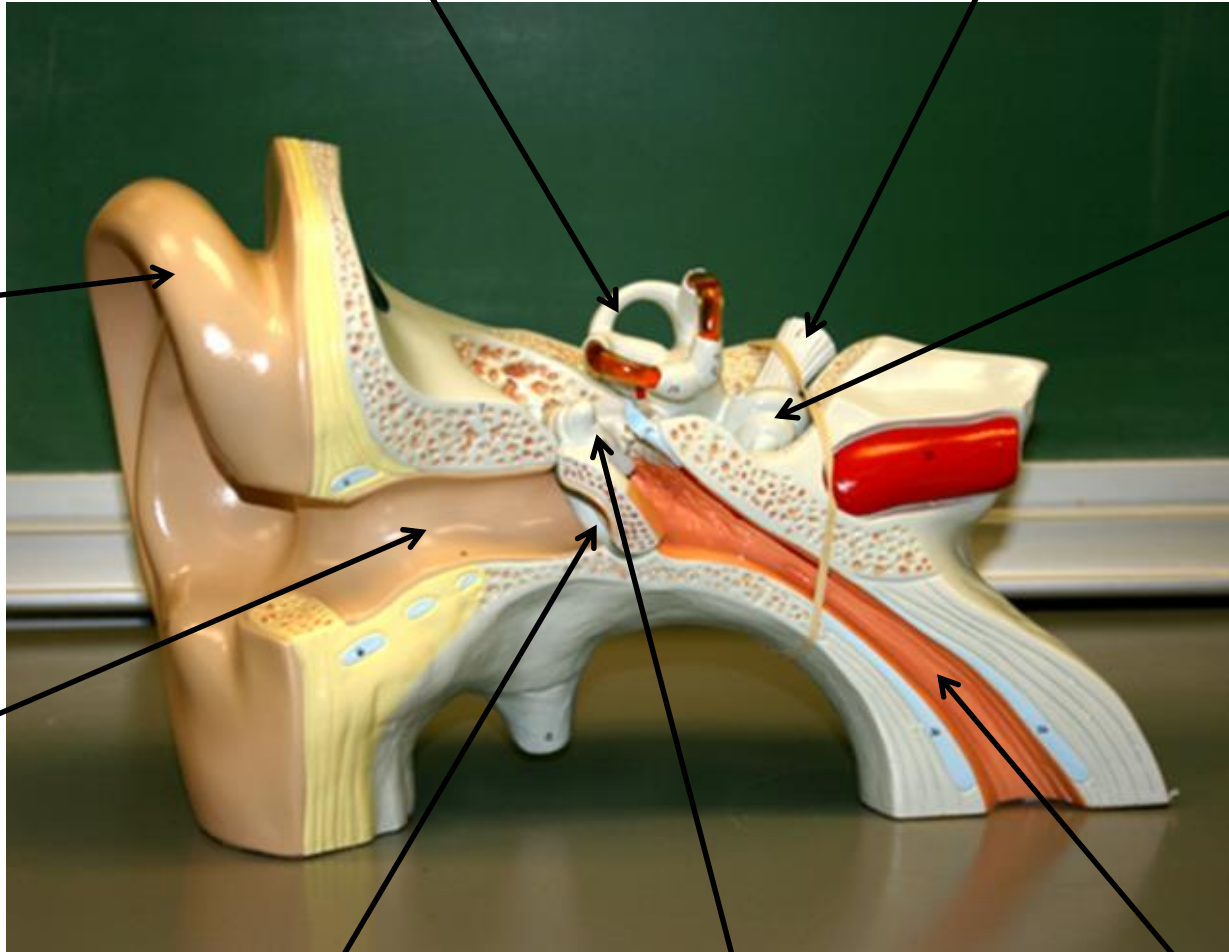
Cochlea

External
Acoustic
Meatus

Tympanic
Membrane

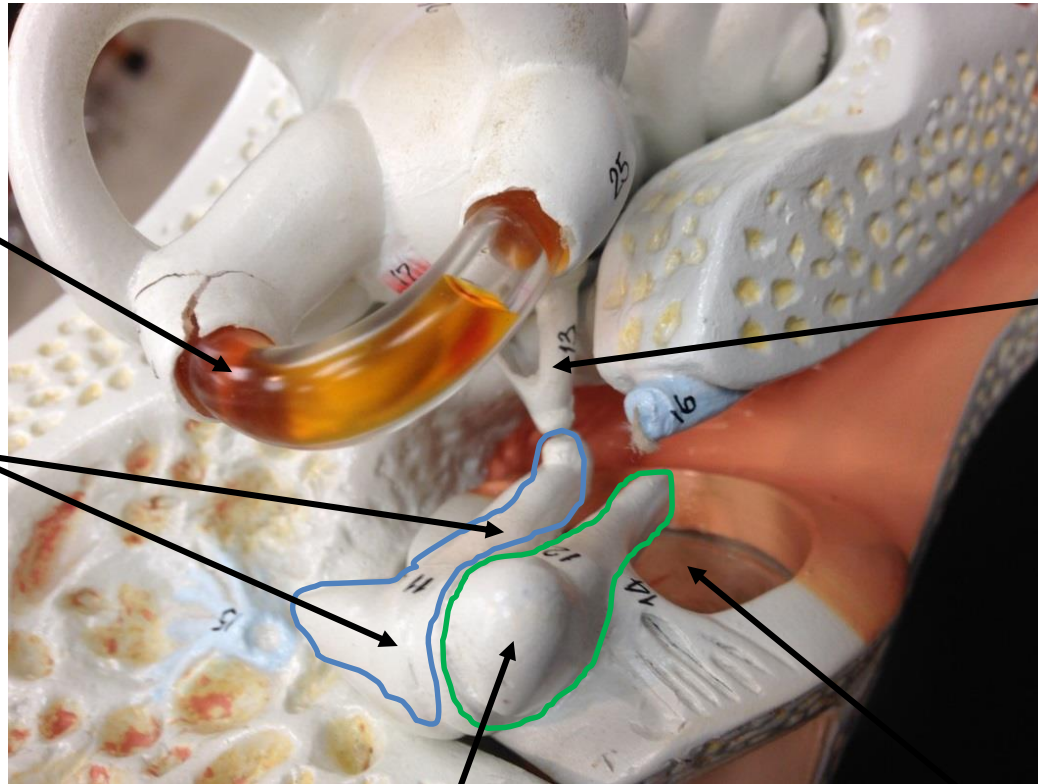
Ossicles

Pharygotympanic
(auditory,
eustachian) tube



Ear ossicles (detailed)

Lateral
Semi-circular
canal



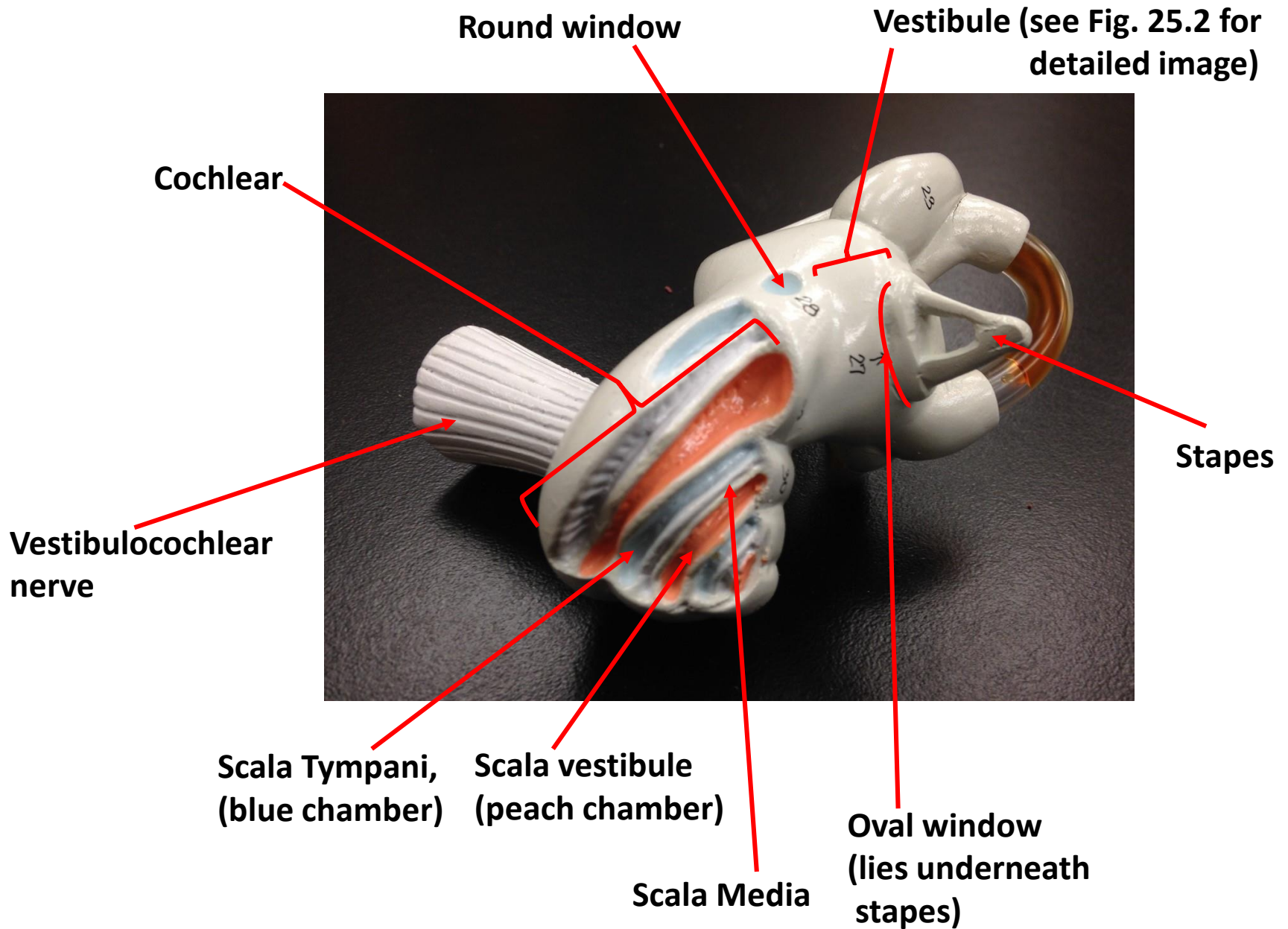
Incus

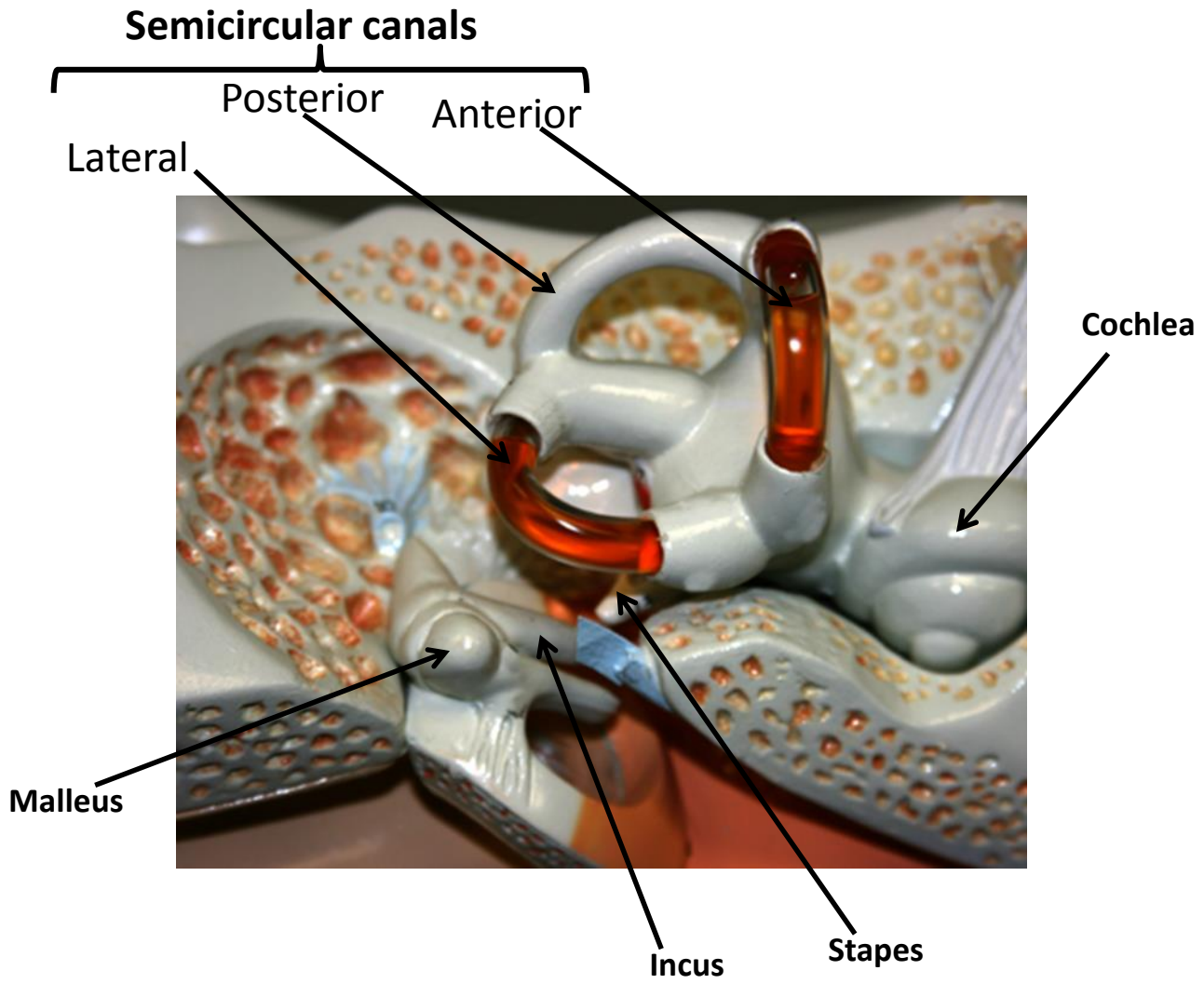
Stapes

Malleus

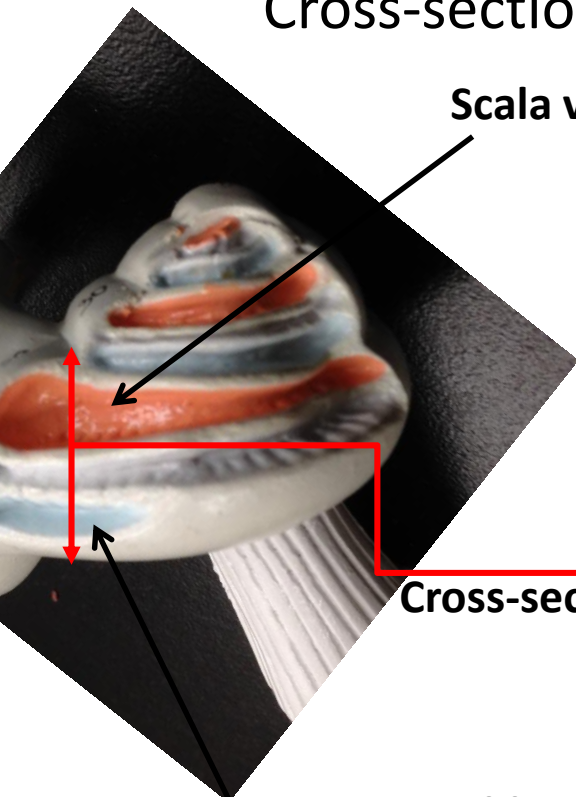
Tympanic membrane

Internal ear: detailed





Cross-section (internal view) of cochlear



Scala vestibuli

Vestibular membrane

Tectorial membrane

Scala Media

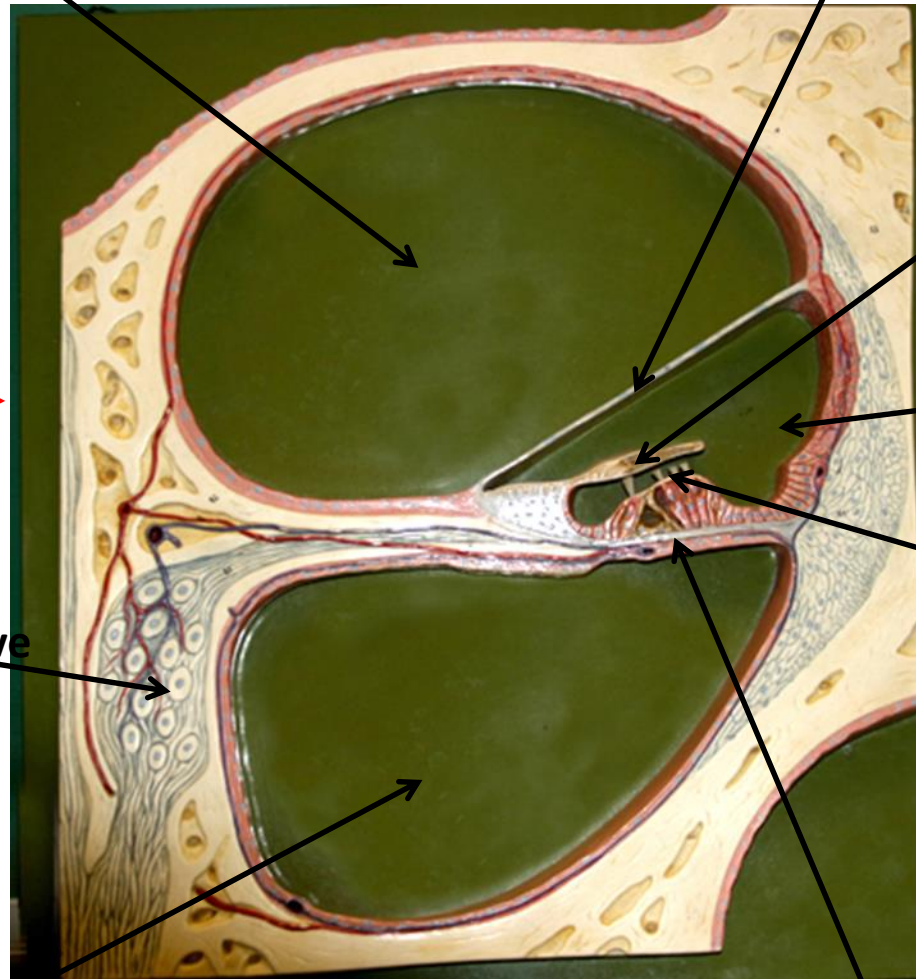
Hair cells

Cross-section

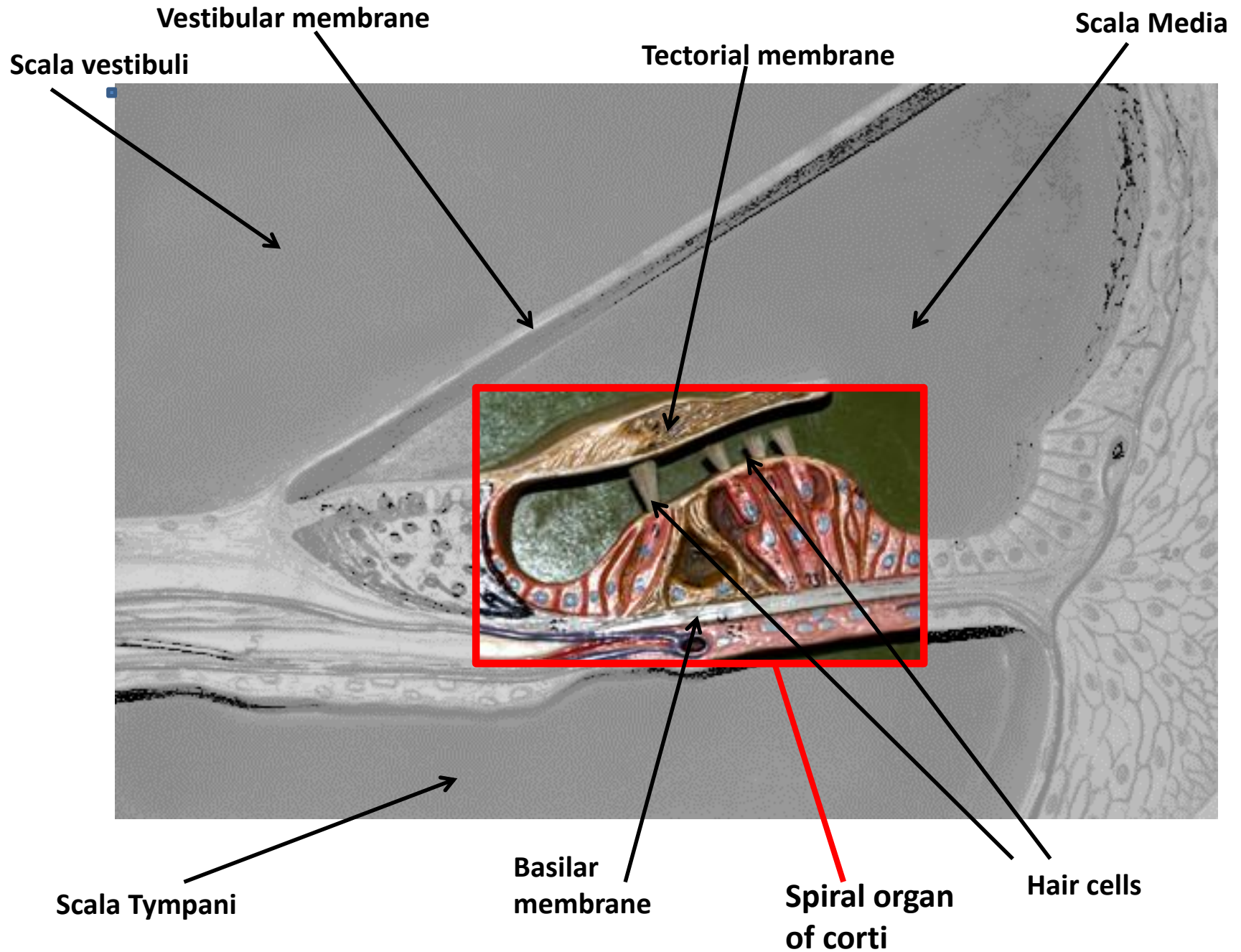
Cochlear nerve

Scala Tympani

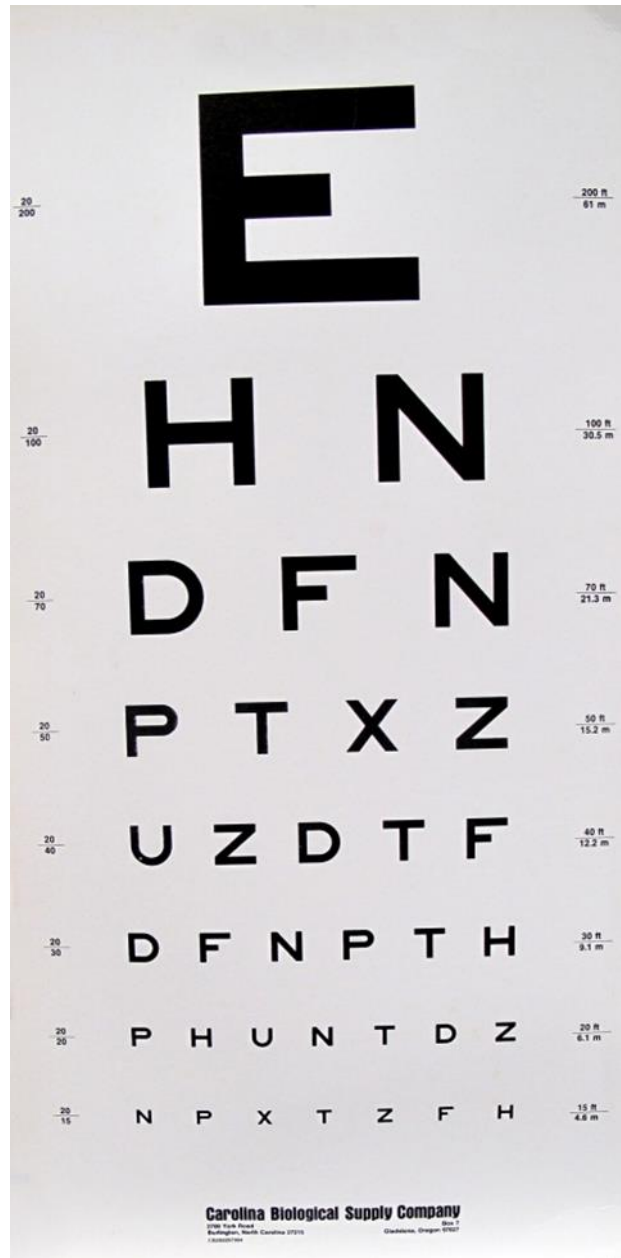
Basilar membrane



Cross-section of cochlear to show detailed view of Organ of Corti

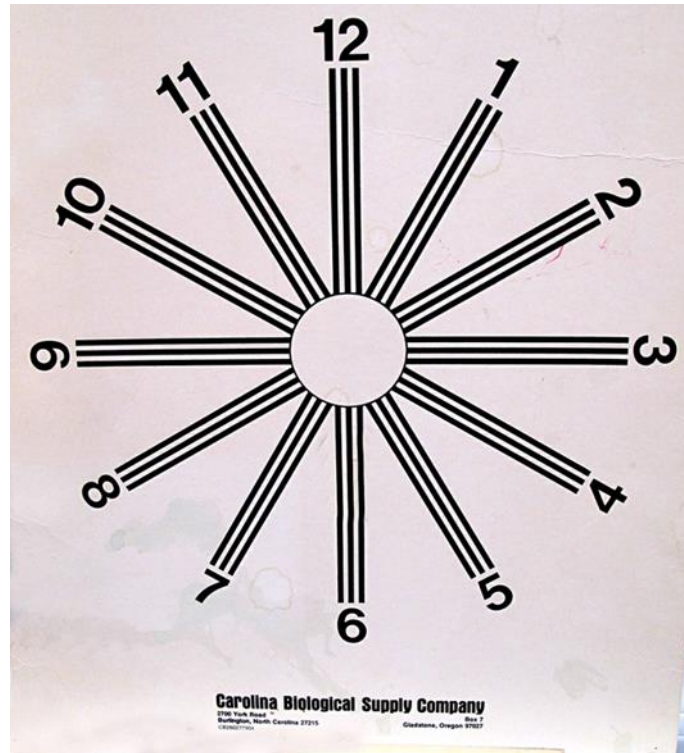


Snellen Eye Chart



Tests Visual Acuity

Astigmatism Testing Chart



Blind Spot Test

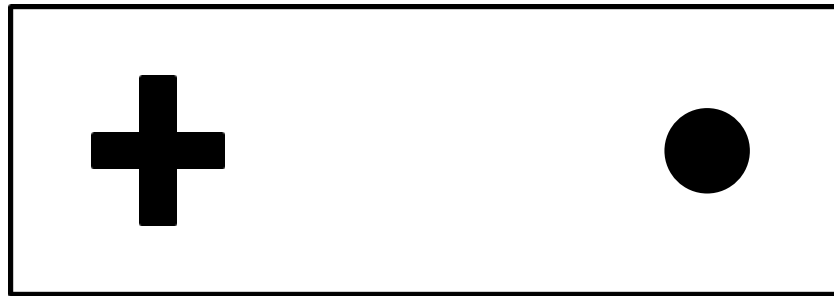
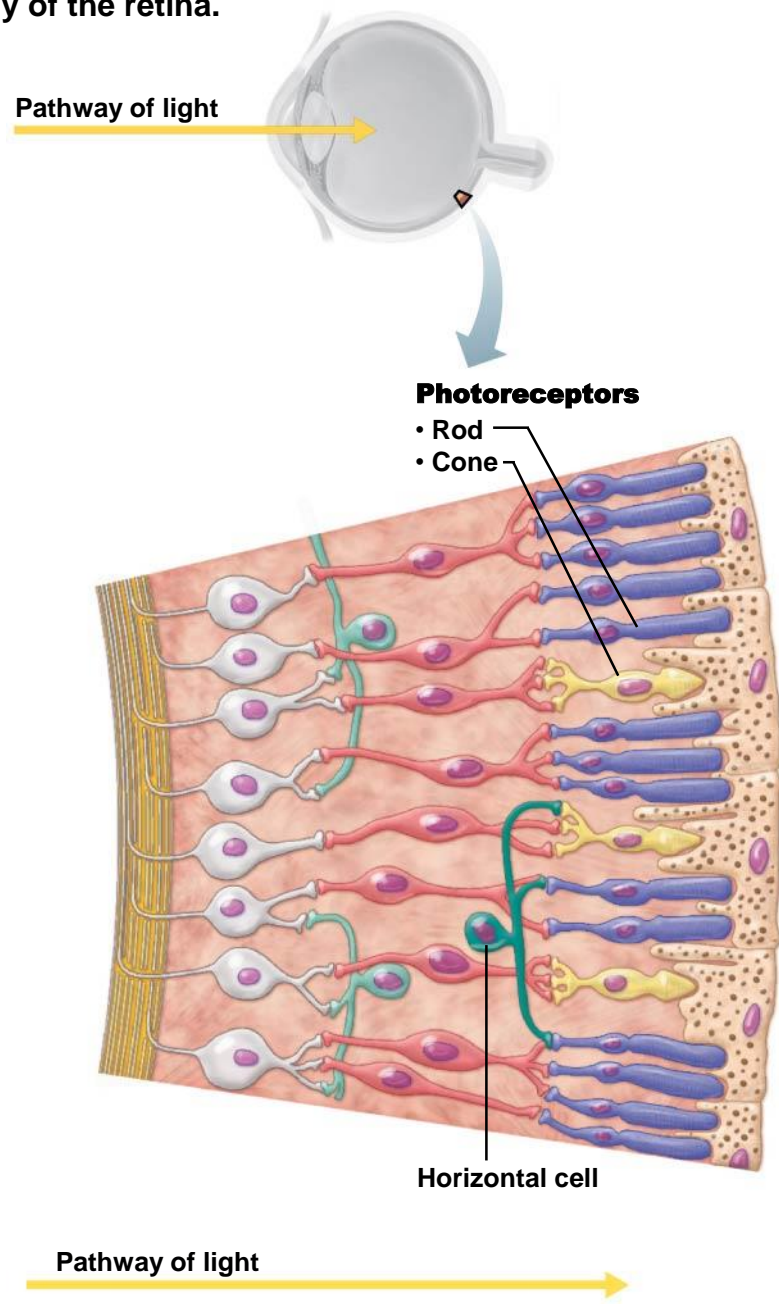
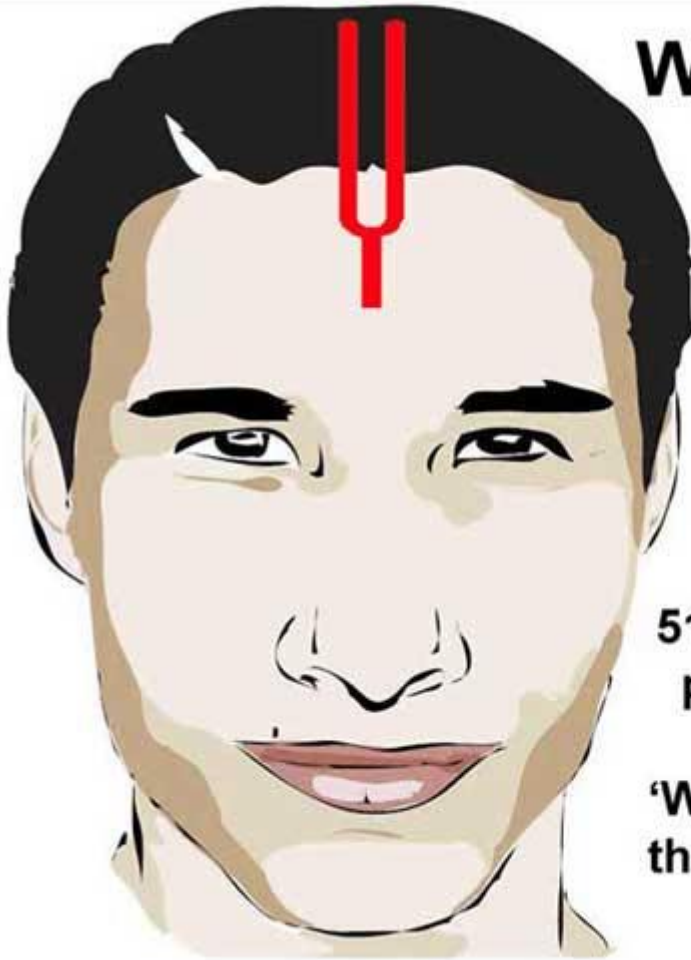


Figure 23.4a Microscopic anatomy of the retina.



(a)



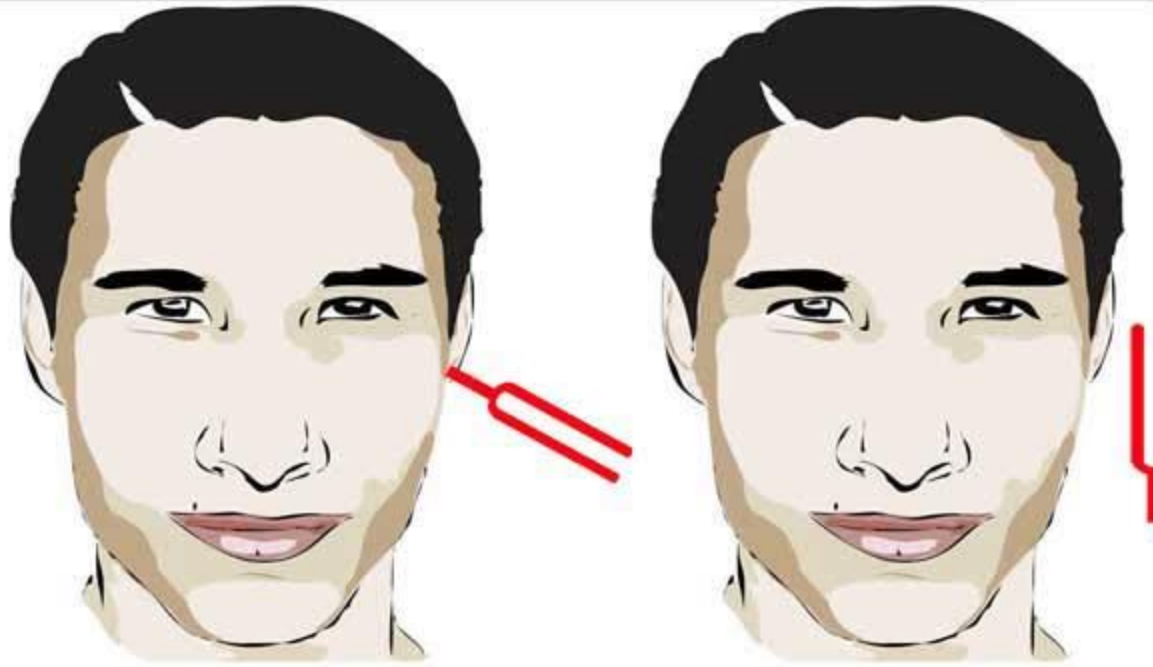
Weber's Test

512 Hz Tuning Fork
placed in midline.

'Where can you hear
the buzzing noise?'

Tests Centralization vs. Lateralization of Sound

Rinne Test



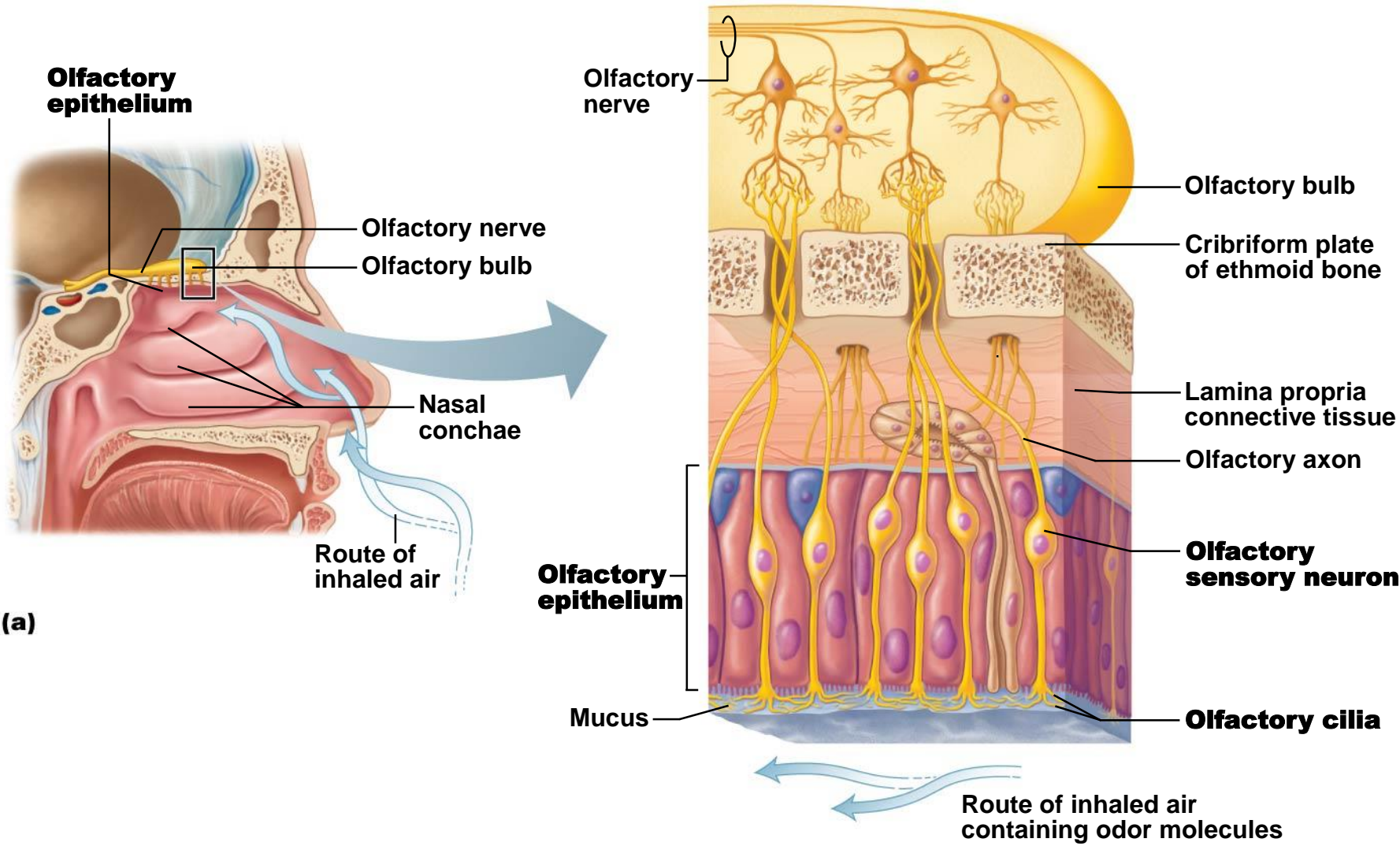
Rinne's Test

With a 512 Hz tuning fork press against the mastoid bone and then hold it 1cm away from the ear.

'Which is louder, behind the ear or in front?'

Compares bone vs. air conduction

Figure 26.1a Location and cellular composition of olfactory epithelium.

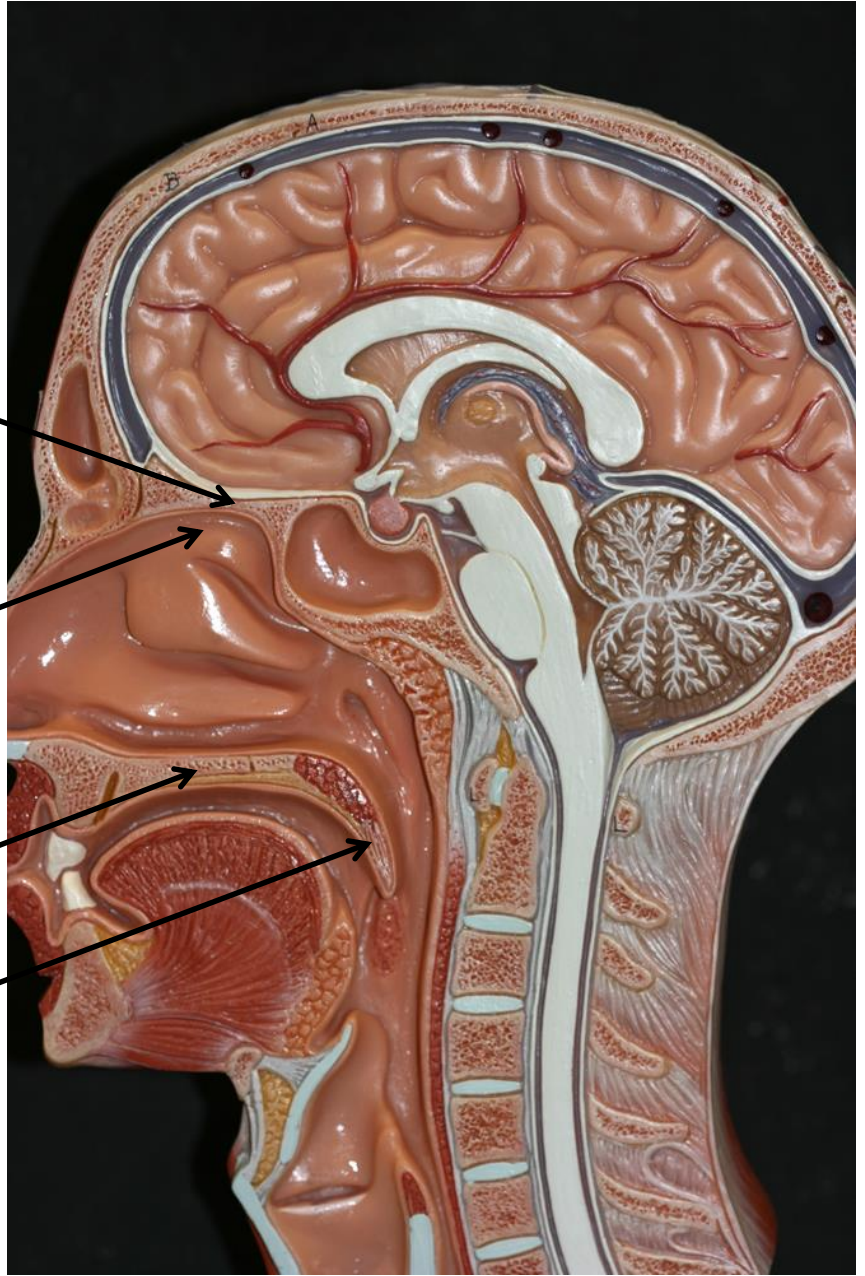


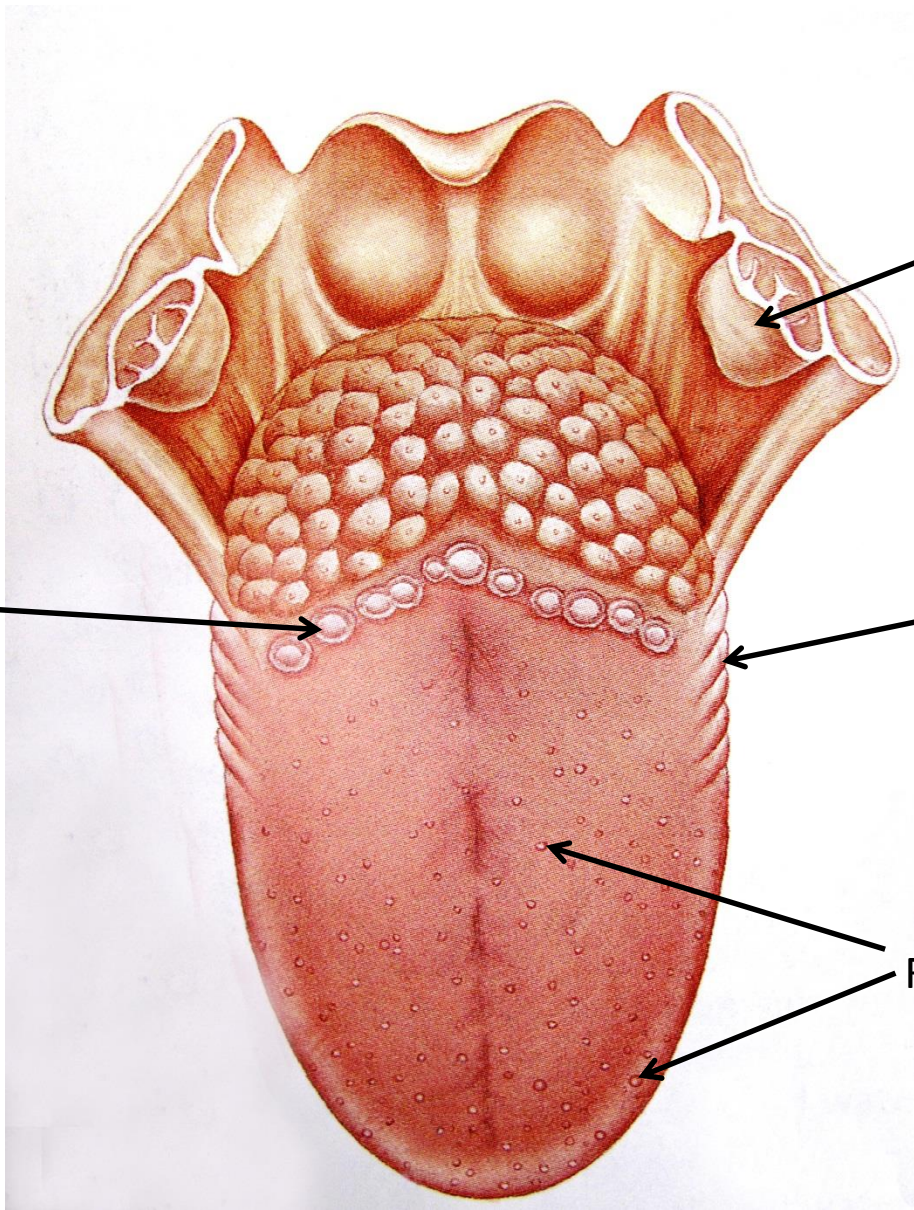
Cribriform plate

Olfactory Epithelium

Hard palate

Soft palate





Tonsils

Vallate Papillae

Foliate Papillae

Fungiform Papillae